

KAWASAKI KINKAI KISEN KAISHA, LTD.

Corporate Profile

Name

KAWASAKI KINKAI KISEN KAISHA, LTD.

Date of Establishment

May 1, 1966

Head Office

25th Floor, Kasumigaseki Common Gate West Tower
2-1, Kasumigaseki 3-chome, Chiyoda-ku, Tokyo

Paid-in Capital

2,368.65 million yen

President and Representative Director

Shigenori Ishii

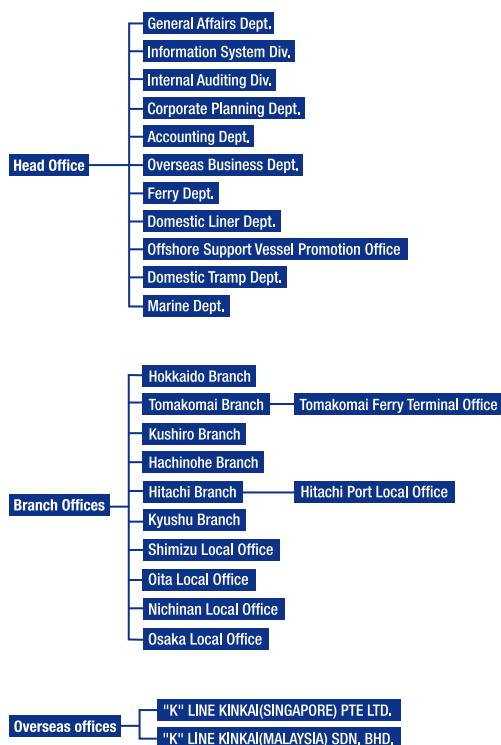
Number of Employees

224 (126 on land, 98 at sea) (as of Mar. 31, 2016)

Business Lines

- Marine transportation
- Marine transportation brokerage
- Port transportation and warehousing
- Cargo transportation handling
- Marine transportation agent
- General insurance agent and life insurance solicitation
- Vehicle and vehicle accessories rental
- Information processing service and information providing service
- Oversight of ship construction and repair
- Real estate sales/purchase, rental, brokerage and management
- Gasoline stand management, automobile repair and sales of automobile parts
- Restaurant, coffee shop and gift shop management
- Sales of folkcrafts and handicrafts, agricultural products, livestock products, marine products, spices, beverages, processed foods, liquor, tobacco and postal stamps
- All incidental business pertaining to the above

Organizational chart



Company History

- 1966** 5 The company was founded.
Business rights for domestic services were transferred from Kawasaki Kisen.
- 10 The Tokyo/Tomakomai liner route was established.
- 1968** 10 The Japan/Indochina liner route commenced services.
- 1969** 3 The first coastal shipping RORO vessel in Japan, HOKUO MARU, was launched for service on the Tokyo/Tomakomai route.
- 4 Independent operation of near-seas tramps services began.
The specialized limestone pusher barge, MITSUKAWA MARU, was launched.
- 1970** 4 The Japan/Sabah • Sarawak liner route commenced operation.
- 11 The Japan/Hong Kong • The Malacca Straits liner route was established.
- 1971** 11 Silver Ferry Co. Ltd. was established.
- 1973** 4 Deployment of full-size south-sea lumber carriers including vessels of 5000dwt or more commenced.
- 4 Silver Ferry Co. Ltd. began the Hachinohe/Tomakomai passenger ferry operations.
- 1975** 4 Head Office was relocated to Chiyoda-ku, Tokyo.
- 1975** 10 The Tokyo/Tomakomai cargo ferry operations commenced through joint management with Nihonenkai Ferry (currently MOL Ferry Co., Ltd.).
- 1979** 11 Silver Ferry Co. Ltd. increased services of FERRY HACHINOHE, operated jointly with Higashinihoh Ferry Co., on the Hachinohe/Tomakomai route to 2 services/day.
- 1981** 11 The Tokyo • Hitachi/Tomakomai container services commenced.
- 1983** 7 Head Office was relocated to the Iino Building.
- 1985** 11 The Moji/Hitachi container services commenced through joint operations with Hishika Kaiun (currently Mitsubishi Chemical Logistics Co.).
- 1986** 4 Deployment of conventional ships to the Japan/Bangkok liner route commenced.
- 11 Singapore Representative Office was established.
- 1987** 10 The Port of Onahama was added to the ports of call on the Moji/Hitachi container route.
- 1988** 4 Hitachi Local Office (currently Hitachi Branch) was located.
- 12 Singapore Representative Office was closed. Cross Trade Shipping Pte. Ltd. was established as a local corporation (currently "K" Line Kinkai (Singapore) Pte. Ltd.).
- 1989** 9 The company's first specialized wood-chip carrier, TROPICAL SEAROAD, was launched.
- 1992** 4 Merger with Silver Ferry Co. Ltd. Rights to the Hachinohe/Tomakomai passenger ferry business was received.
- 6 The Port of Niihama was added to the ports of call on the Moji/Onahama • Hitachi container route.
- 10 Kushiro Local Office (currently Kushiro Branch) was located.
- 1993** 7 The Kushiro/Hitachi liner route was established.
HOKUREN MARU, a high-speed RORO vessel, was launched.
- 1995** 3 Company was listed on the Second Section of the Tokyo Stock Exchange.
- 1997** 6 HOKUREN MARU No.2, a high-speed RORO vessel, was launched on the Kushiro/Hitachi liner route.
- 1998** 3 Newly built passenger ferry, SILVER QUEEN, was launched.
- 1999** 9 Third generation ultra-high speed cargo ferry, HOKKAIDO MARU, was launched.
- 11 Nichinan Local Office was located.
- 12 The Nichinan/Osaka/Tokyo (currently Nichinan/Hososhima/Tokyo) liner route was established.
NAN OH MARU, a RORO vessel, was launched.
The Tomakomai/Hitachi liner route was established.
SHINHOKUO MARU, a RORO vessel, was launched.
- 2000** 9 Kawasaki Kinkai Kisen Kaisha (M) Sdn. Bhd. was located as a local corporation in Kuching in East Malaysia (currently "K" Line Kinkai (Malaysia) Sdn. Bhd.).
- 2001** 7 YUOU MARU was launched on the Hitachinaka/Tomakomai liner route, and with SHINHOKUO MARU, daily services commenced.
Commencement of joint operations with Kinkai Yusen Logistics Co., Ltd. (currently Kinkai Yusen Co., Ltd.).
- 9 A specialized wood-chip carrier, TROPICAL BREEZE, was launched following TROPICAL SEAROAD
- 2002** 10 The Tomakomai/Kushiro/Sendai/Tokyo/Nagoya/Osaka liner route was established, and KAMIKAWA MARU, a RORO vessel, was launched.
- 2004** 7 Head Office was relocated to Daido Seimei Kasumigaseki Building.
- 2006** 4 Kitakyushu Local Office (currently Kyushu Branch) was located.
- 2006** 6 Second generation high-speed RORO vessel, HOKUREN MARU, was launched.
The Hitachi/Kitakyushu route was established.
- 7 Second generation high-speed RORO vessel, HOKUREN MARU No.2, was launched.
- 12 Passenger ferries commenced 4 services / day.
- 2007** 4 The Tokyo/Tomakomai route commenced through joint management with Kinkai Yusen Logistics Co., Ltd.
- 10 The specialized limestone carrier, MITSUKAWA MARU, was launched.
- 2008** 2 The specialized coal carrier, JP COSMOS, was launched.
- 11 The specialized coal carrier, JP TSUBAKI, was launched.
- 2009** 2 The tweendecker, TROPICAL VENUS, was launched.
- 8 Services were suspended on Tokyo/Tomakomai liner route.
with Kinkai Yusen Logistics Co., Ltd. (currently Kinkai Yusen Co., Ltd.).
Hitachi Branch was relocated to the Hitachinaka District and the Hitachi Port Office was newly established.
- 2010** 11 28,000dwt, MAGNOLIA ACE, was launched.
- 2011** 4 The tweendecker, TROPICAL BINTANG was launched.
- 2012** 4 Newly built passenger ferries, SILVER PRINCESS was launched.
- 2013** 2 The specialized coal carrier, YAMASAKURA, was launched.
Fourth generation newly built large RORO vessel, HOKKAIDO MARU, was launched.
- 6 Newly built passenger ferries, SILVER EIGHT was launched.
- 11 Head Office was relocated to Kasumigaseki Common Gate.
- 2014** 6 Small handy vessel, GALLEON, was launched.
- 8 Fifth generation newly built large RORO vessel, HOKUO MARU, was launched.
- 2016** 3 The company's first offshore support vessel, AKATSUKI, was launched.

(As of April 2016)

